



# Ilketshall St Lawrence Primary School Newsletter

## **Friends of Ilketshall News**

Thank you to everyone who supported the Car Boot Sale last Saturday. We were really lucky with the weather and raised a brilliant £331.60.

AGM is on Monday 17<sup>th</sup> October at 8p.m. in the school hall. Our Friends Association work tirelessly to raise funds for resources etc. to enhance the opportunities for all the children in this school. So if you have any good ideas for fundraising or can give some time to support the Friends, please come along, it will be greatly appreciated.

## **MacMillan Coffee Morning**

The Friends are holding a coffee morning in the school hall tomorrow in aid of MacMillan. If you can spare some time please feel free to pop in to support this worthy cause. Donations of cakes will be gratefully received.

## **Handwriting**

This year, we have introduced continuous cursive handwriting in school. It is different to many handwriting styles as the majority of letters start from the line. Research shows that this is particularly good for children who find pencil control difficult and for children with special needs. The children are picking it up really well and there is already a noticeable difference in the quality of their handwriting. Please find overleaf a copy of the letter formation if you wish to practise at home with your children.

## **Phil the Bag**

Our next visit from Phil the Bag will be Monday 17<sup>th</sup> October. If you are thinking of having a good 'post summer' clear out of your wardrobes, this is the perfect time to get rid of all your old clothing, towels, duvet covers etc. and raise some money.

## **Harvest Festival**

We will be celebrating Harvest Festival on Friday 14<sup>th</sup> October at 2.20p.m. in the school hall. Once again this year we will be collecting tins and dried goods for the Waveney Foodbank.

## **Supporting your child's progress in school**

Thank you for all the positive feedback from those who attended this evening. We are working to build on the strong partnership we have with parents in supporting your children's learning and events like this will do that. Thank you also to the staff for giving up their time to help organise this event.

## **Staffing News**

Following her recent illness, Mrs Kent has decided not to continue as our Midday Supervisor. She has been a part of our school community for over twenty years. As soon as she is well enough, we are hoping that she will be able to come into school, so that we can say goodbye and thank her properly for all her work over the years. In the meantime, we wish her a speedy recovery.

## **Dates for diaries**

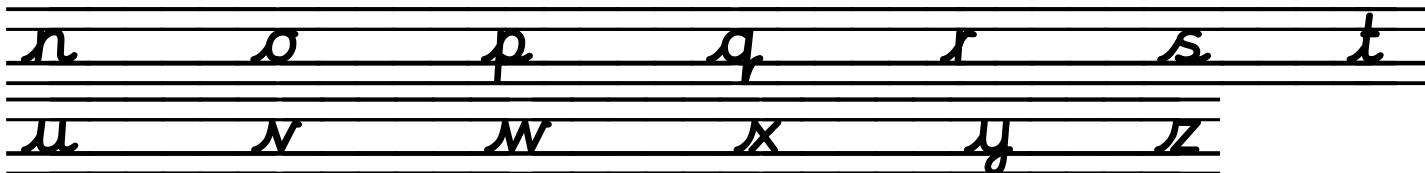
- 4<sup>th</sup> October – Girl's Football – Earsham
- 14<sup>th</sup> October – Harvest Festival 2.20p.m. – School hall
- 17<sup>th</sup> October – Phil the Bag
- 20<sup>th</sup> October – Partnership learning day (details to follow)
- 21<sup>st</sup> October – Halloween Disco 5.30 p.m.

## **Future dates to pencil into your diaries**

- 7<sup>th</sup> and 10<sup>th</sup> November – Parents' evenings
- 10<sup>th</sup> November – Yr 6 Battle of the Books
- 16<sup>th</sup> November – Eagle Owls visit to see Michael Rosen
- 24<sup>th</sup> November – Yr 6 Crucial Crew
- 6<sup>th</sup> December – Yr 6 Maths Challenge
- 13<sup>th</sup> and 15<sup>th</sup> December – School Production – Evening performances
- 16<sup>th</sup> December – School Production – Afternoon performance
- 14<sup>th</sup> December Pantomime – Marina Theatre

# Continuous Cursive Letter Formation

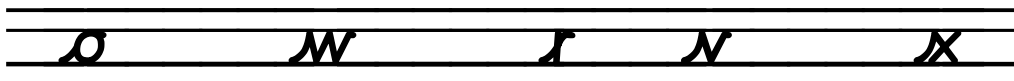
Individual letters:



Most letters start from the bottom and join from the bottom:



There are some exceptions. These letters continue to join from the top:



Have a try:

